

BENEFITS OF THE PLAN: LOS ANGELES COUNTY

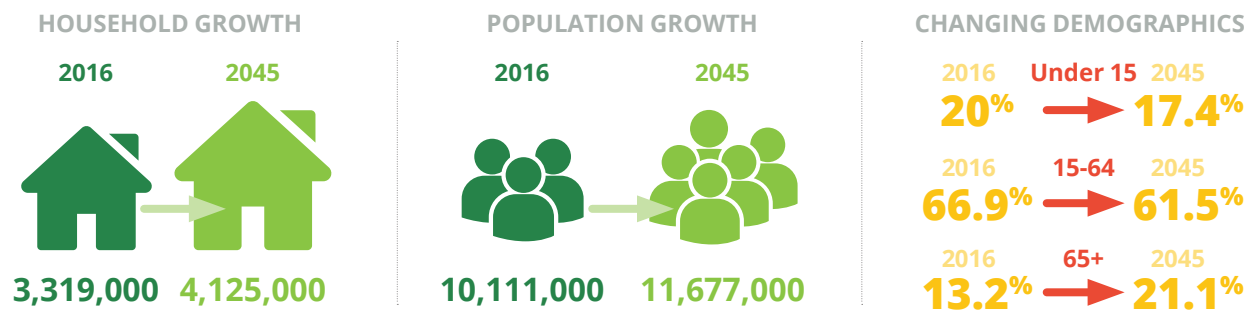


Connect SoCal is a plan for greater mobility, cleaner air and better access to job centers in Los Angeles County.

SCAG has released a draft of Connect SoCal, the 2020–2045 Regional Transportation Plan/Sustainable Communities Strategy, for public review and comment through January 24, 2020. The Draft Connect SoCal plan presents a long-range vision that balances future mobility and housing needs with economic, environmental and public health goals. It will help guide the region’s growth, and includes transportation improvements and land use ideas to shape the future of Southern California.

SCAG worked closely with Los Angeles County partners to develop Connect SoCal, including the Los Angeles County Metropolitan Transportation Authority (Metro), elected officials and local jurisdictions. The plan includes \$291.5 billion in transportation investments specific to Los Angeles County, and incorporates all the projects Metro identified as local priorities. This factsheet identifies changes coming in the next 25 years, highlights benefits that Connect SoCal will bring to Los Angeles County partners to develop Connect SoCal, and lists examples of transportation projects in the plan.

HOW LOS ANGELES COUNTY WILL GROW



PLAN BENEFITS FOR LOS ANGELES COUNTY

REDUCES VEHICLE MILES TRAVELED



4.4%

Decrease when plan compared to baseline

EMPLOYMENT IMPACT



195,100

Average jobs generated per year

LAND CONSUMED



41%

Reduction in greenfield area of preserved land compared to trend

HOUSEHOLD COST SAVINGS (TRANSPORTATION, WATER, ENERGY)

\$12,143 - \$11,600 = \$543

Household cost without plan

Household cost with plan

• Annual household savings

PROJECTED DAILY DELAY IMPROVEMENTS (PER CAPITA)



13.3 MIN.

2016 Delay



13.7 MIN.

2045 Delay without plan



11.5 MIN.

2045 Delay with plan

SAMPLE LOS ANGELES COUNTY TRANSPORTATION PROJECTS

DESCRIPTION	COMPLETION YEAR
Transit Corridor – Sepulveda Pass	2033
Highway Improvements – I-710 South from Ocean Blvd. to Intermodal Railroad yards	2040
Light Rail Extension – Metro Gold Line Eastside to South El Monte	2035
Subway Extension – Metro Westside from Century City to Westwood	2027
Subway Extension – Metro Purple Line from Wilshire/Western to La Cienega Blvd.	2023
Subway Extension – Metro Purple Line from La Cienega Blvd. to Century City	2026
Transit Corridor and Light Rail Extension – Crenshaw/LAX	2020
Regional Transit Connector – Metro Blue, Gold, and Expo lines	2021
Automated People Mover System – LAX Landside	2023
Widening for HOV and mixed-flow lanes – I-5 from Orange County line to I-605	2022
Light Rail Extension – Metro Gold Line from Azusa to San Bernardino County line	2025
Interchange improvements and auxiliary lanes – I-5 from SR-134 to SR-170	2022
Widening – SR-138 from I-5 to SR-14	2030
Interchange improvements – SR-57/SR-60	2029
Intermodal Railyard Expansion – Pier B	2032
ExpressLanes – I-10 from I-605 to San Bernardino County Line	2028
Grade Separations – Alameda Corridor East	2021
Widening and on/off ramp improvements – Sepulveda Blvd.	2030
Transportation System Management & Transportation Demand Management – 710 North	2025
ExpressLanes – I-605 from I-105 to Orange County Line	2031

DOWNLOAD THE PLAN AND SHARE FEEDBACK

The Draft Connect SoCal and 20 technical reports supporting the plan, including a full list of transportation projects for the region, are available for download at connectsocial.org.

The comment period for the Draft Connect SoCal plan starts on November 14, 2019 and ends at 5:00 p.m. on January 24, 2020. Any interested individual, group or business can comment on the Draft Connect SoCal plan. Unless you are attending a public hearing, all comments must be in writing and they must be received during the comment period.

The easiest and fastest way to submit your comments is to use the comment form available on the Connect SoCal website. You can also submit comments by U.S. Mail, or speak at one of the three public hearings SCAG is hosting during the comment period. More details on public events discussing the draft Connect SoCal plan are available at connectsocial.org