

BENEFITS OF THE PLAN: SAN BERNARDINO COUNTY

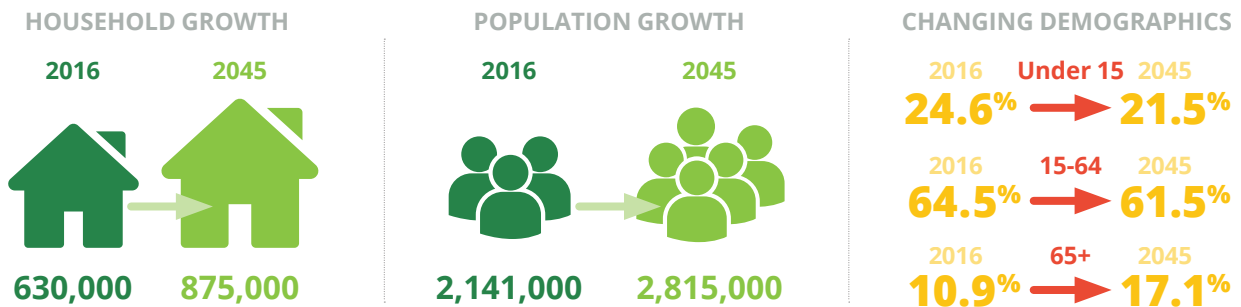


Connect SoCal is a plan for greater mobility, cleaner air and better access to job centers in San Bernardino County.

SCAG has released a draft of Connect SoCal, the 2020–2045 Regional Transportation Plan/Sustainable Communities Strategy, for public review and comment through January 24, 2020. The Draft Connect SoCal plan presents a long-range vision that balances future mobility and housing needs with economic, environmental and public health goals. It will help guide the region’s growth, and includes transportation improvements and land use ideas to shape the future of Southern California.

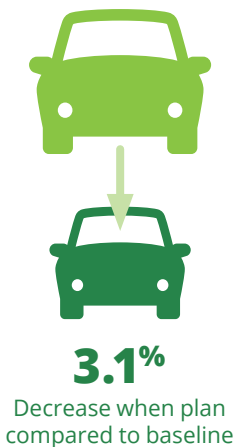
SCAG worked closely with San Bernardino County partners to develop Connect SoCal, including the San Bernardino County Transportation Authority (SBCTA), elected officials and local jurisdictions. The plan includes \$38.7 billion in transportation investments specific to San Bernardino County, and incorporates all the projects SBCTA identified as local priorities. This factsheet identifies changes coming in the next 25 years, highlights benefits that Connect SoCal will bring to San Bernardino County, and lists examples of transportation projects in the plan.

HOW SAN BERNARDINO COUNTY WILL GROW

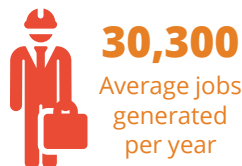


PLAN BENEFITS FOR SAN BERNARDINO COUNTY

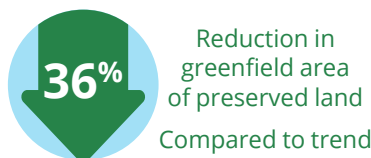
REDUCES VEHICLE MILES TRAVELED



EMPLOYMENT IMPACT



LAND CONSUMED



HOUSEHOLD COST SAVINGS (TRANSPORTATION, WATER, ENERGY)



PROJECTED DAILY DELAY IMPROVEMENTS (PER CAPITA)



SAMPLE SAN BERNARDINO COUNTY TRANSPORTATION PROJECTS

DESCRIPTION	COMPLETION YEAR
Express Lanes – I-10 from the Los Angeles County Line to I-15	2022
Express Lanes I-10 from I-15 to Redlands	2024
Redlands Passenger Rail – from downtown San Bernardino to University of Redlands	2021
Bus Rapid Transit – West Valley Connector Phase 1	2024
Express Lanes – I-15 from SR-60 to Foothill Blvd	2045
Lane Additions – SR-210 from Highland Ave. to San Bernardino Ave	2021
Light Rail Extension – from Los Angeles County Line to Montclair	2028
Interchange Improvements – I-10 at Cedar	2040
Widening Improvements – US-395 from Chamberlaine Way to SR-18	2025
Interchange Improvements – I-15 at Bear Valley Rd	2045
Apple Valley Road and SR-18 Realignment	2021
Ranchero Road Widening	2021
Interchange Improvements – I-15 at Sierra Ave	2030
N. First Ave Bridge over BNSF - Barstow	2023
Safety and Capacity Improvements – SR-62	2035

DOWNLOAD THE PLAN AND SHARE FEEDBACK

The Draft Connect SoCal and 20 technical reports supporting the plan, including a full list of transportation projects for the region, are available for download at connectsocial.org.

The comment period for the Draft Connect SoCal plan starts on November 14, 2019 and ends at 5:00 p.m. on January 24, 2020. Any interested individual, group or business can comment on the Draft Connect SoCal plan. Unless you are attending a public hearing, all comments must be in writing and they must be received during the comment period.

The easiest and fastest way to submit your comments is to use the comment form available on the Connect SoCal website. You can also submit comments by U.S. Mail, or speak at one of the three public hearings SCAG is hosting during the comment period. More details on public events discussing the draft Connect SoCal plan are available at connectsocial.org